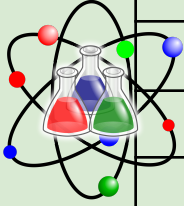
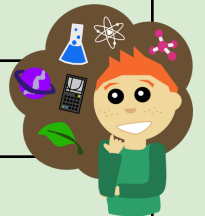


Biology with Berta



| Week | Topic | Tuesdays |
|--|---|------------------------------------|
| Week 1- Science Intro | Types of Science | January 16th |
| Week 2- Science Intro | What is the Scientific Method | January 23rd |
| Week 3- Science Intro | Scientific Method in Action | January 30th |
| Week 4- Art Science | Lego Pendulum Art | February 6th |
| Week 5- Art Science | Oobleck vs Slime | February 13th |
| Week 6- Art Science | Chemistry and Crystals | February 20th |
| Week 7- Art Science | Marshmallow Sculptures | February 27th |
| <u>March 5th Canceled</u> | | |
| Week 8- Art Science | Sun Art and Light refraction | March 12th |
| Week 9- Physics | Magnets | March 19th |
| Week 10- Physics | Newton's Cradle | <u>March 26th (MAKE UP)</u> |
| Week 11- Physics | Marble Roller Coaster | April 2nd |
| Week 12- Physics | Watermelon Vs Rubber band | April 9th |
| Week 13- Physics | Flight | April 16th |
| Week 14- Biology | Cell Biology | April 23rd |
| Week 15- Biology | Kingdoms of life | April 30th |
| Week 16- Biology | The Animal Kingdom and Symmetry | May 7th |
| Week 17- Biology | The Animal Kingdom and Processes | May 14th |
| Week 18- Biology | The Animal Kingdom and Vertebrates vs Invertebrates | May 21st |
| <u>Open House May 25th @ 12pm-5pm</u> | | |



There will be two time slots available on each class date!

Sign up for 10am-12pm or 1pm-3pm